

Honeywell Imaging and Mobility



Solutions to empower productivity.

Honeywell

Honeywell is a leading manufacturer of reliable, high-performance data collection and communication solutions including rugged mobile computers and handheld scanners designed specifically for field-based, in-premise, and transaction processing applications. Serving a diverse set of markets and applications around the world, Honeywell provides solutions that enable customers to effectively track and manage data, people and assets throughout the supply chain.

Adaptus® Imaging Technology

A better solution for your data collection needs—today and tomorrow.



Adaptus Imaging Technology delivers all of the basic barcode reading functionality of laser scanners, while providing advanced image capture capabilities—enabling you to achieve more efficiency and productivity than ever before.

With Adaptus Imaging, you have the ability to:

- Read virtually any type of barcode label or tag
- Read damaged barcodes with ease
- Capture digital images and signatures
- Configure your Dolphin Mobile Computer software

And much more...



Table of Contents:

Dolphin® Mobile Computers	pg 2
Handheld Image Scanners	pg 3
Document Imaging	pg 4
Self-Service Kiosk	pg 4
Quick Check® Barcode Verification Solutions	pg 4
Global Services	pg 5
Software	pg 5
Product Technical Specifications	pg 6

Dolphin® Mobile Computers

Dolphin 9000 Series Mobile Computers



NEW

Dolphin 9000 Mobile Computer

Optimized for robust mobile data collection and communication applications, combining a rugged, user-friendly design with a complete suite of technologies - empowering mobile workers to be more productive.

- True industrial-grade durability to ensure reliability in rugged mobile applications
- Optimized design – user-preferred features, including angled scan engine and integrated finger saddle for comfortable and intuitive use throughout the work shift
- Full wireless connectivity – integrated GSM/GPRS and 802.11b/g for real-time data exchange and voice communication, plus Bluetooth® for efficient wireless connection to peripherals
- Integrated GPS technology enabling location-based applications for improved operator productivity and more effective field asset management

- Shift-Plus™ battery life for 10+ hours of continuous use
- Multi-functional data capture – linear and 2D barcode scanning, image capture and signature capture



Dolphin 9550 / 9551 / 9501 Mobile Computer

Full PDT designs for in-premise and long-range scanning applications

- 9550 / 9551 feature ergonomic pistol grip and large screen for comfort and ease of use in-premise
- 9501 provides a full flashlight design
- Wireless connectivity to enterprise networks and cordless peripherals through integrated 802.11b and Bluetooth®
- Laser scanner for extended range scanning (Dolphin 9551 / 9501)



Dolphin 7000 Series Mobile Computers



GPS Enabled

Dolphin 7900 Mobile Computer

The premier 7000 series device, providing the highest level of durability and functionality for mobile data collection and communication applications

- Full wireless connectivity – GSM/GPRS, 802.11b and Bluetooth® for real-time communication – anytime, anywhere
- Integrated GPS technology enabling location-based applications for improved operator efficiency and more effective field asset management
- Multi-functional data capture – linear and 2D barcode scanning, image capture and signature capture
- Shift-Plus™ battery life for 10+ hours of continuous use



Dolphin 7850 Mobile Computer

Built specifically for scan-intensive, in-premise mobile applications

- Optimized design for high-volume scanning, featuring an integrated pistol grip and easy-to-view upward angled display
- Industrial-grade design to ensure reliability in harsh, high-use environments
- Wireless connectivity to enterprise networks and cordless peripherals through integrated 802.11b/g and Bluetooth®
- Flexible data capture options – imaging technology for standard scanning applications or laser option for extended range scanning
- Shift-Plus™ battery life for 10+ hours of continuous use



Dolphin 7600 Mobile Computer

Full mobile computing functionality in a light-industrial, compact and extremely ergonomic design

- Integrated finger saddle and narrow, contoured body for easy one-handed use
- Built for reliability in light-industrial environments
- Full wireless connectivity – GSM/GPRS, 802.11b/g and Bluetooth® for real-time communication – anytime, anywhere
- Multi-functional data capture – linear and 2D barcode scanning, image capture and signature capture
- Shift-Plus™ battery life for 10+ hours of continuous use



Handheld Image Scanners



3000 Linear Imager Series

Our 3000 Series of linear imagers are built to serve a range of linear barcode scanning applications, from general purpose to industrial



3800g General Purpose Linear Imager

One of the world's best selling linear scanners – built with the right combination of performance and durability to meet the broadest range of linear scanning applications.

- Optimal combination of scanning speed and read range to meet most application requirements
- Comfortable, lightweight design for scan-intensive use
- Built to endure the rigors of high-use environments



3200 Linear Imager*

Performance and durability for basic linear scanning, at a value price

- Reliable performance for basic linear scanning applications
- Durable, with no internal moving parts
- User-friendly design features an ergonomic grip and index-finger trigger
- Plug & play — Ready to connect to a host or PC

**does not support WEPOS*



3800gPDF Linear Imager

An ideal solution for applications requiring value-priced or occasional PDF barcode reading

- Provides swipe action decoding of PDF417 barcodes
- Delivers the same dependability and linear scanning performance as the 3800g



3800gHD High Density Linear Imager

- Optimized for high density (HD) linear barcode scanning
- Added versatility of swipe action PDF decoding
- Delivers the same dependability and linear scanning performance as the 3800g



3820 Cordless Linear Imager

Combines all the performance of the 3800r with the freedom of Bluetooth® wireless connectivity

- Extended battery life ensures dependable use for a full work-shift without recharging
- FIPS 140-2 Certified Encryption Option
- Bluetooth Interface Module Option



3800i Industrial Linear Imager

Delivers the highest level of durability for industrial scanning applications

- Industrial-grade durability with impact-absorbing housing
- Environmentally sealed against dust and moisture intrusion, and withstands extreme temperatures
- Extended read range



3820i Cordless Industrial Linear Imager

The rugged durability of the 3800i with the added freedom of Bluetooth® wireless connectivity

- Bluetooth v2.0
- Extended battery life ensures dependable use for a full work-shift without recharging
- FIPS 140-2 Certified Encryption Option
- Bluetooth Interface Module Option



4000 2D Imager Series

The 4000 Series of 2D imagers provide the versatility of linear, stacked and 2D barcode reading, plus digital image capture – all with a device that's purpose-built to match application requirements



4600g General Purpose 2D Imager

Combines the right blend of performance and durability for a wide variety of applications that benefit from the versatility of a 2D imaging solution

- High performance linear and 2D barcode scanning
- Durable, light-industrial construction ensures dependability
- Ease of connectivity with all popular interfaces on board and Visual Express™ software for ease-of-integration
- Disinfectant-ready housing option for health-conscious environments



4820 Cordless 2D Imager

All the performance of the 4600g with the added freedom of Bluetooth® wireless connectivity

- Extended battery life ensures dependable use for a full work-shift without recharging
- Disinfectant-Ready Housing option for health-conscious environments
- FIPS 140-2 Certified Encryption Option
- Bluetooth Interface Module Option



4600r Retail 2D Presentation Imager

Designed specifically for point of sale (POS) presentation scanning applications delivering enhanced functionality only possible with a 2D imager

- Presentation scanning performance on linear barcodes
- Enables drivers license reading for enhanced customer service applications such as e-forms and ID verification
- Protects your investment - enables reading the 2D codes emerging in retail and pharmacy



4800i Industrial 2D Imager

Delivers the highest level of durability for industrial applications, combined with the versatility and value of a 2D imaging solution

- Industrial-grade durability with impact-absorbing housing
- Environmentally sealed against dust and moisture intrusion, and withstands extreme temperatures



4820i Cordless Industrial 2D Imager

The rugged durability and performance of the 4800i with the added freedom of Bluetooth® wireless connectivity

- Extended battery life ensures dependable use for a full work-shift without recharging
- FIPS 140-2 Certified Encryption Option
- Bluetooth Interface Module Option



4800p 2D Image Pod

A compact scanner and presentation stand solution, optimized for multi-functional barcode scanning and image capture where space is limited

- Extremely compact form factor
- Integrated scanner & presentation stand with tray for scanning small POS items, reading barcoded ID cards and capturing images of small documents

6000 Specialty Series



6300 / 6320dpm Direct Part Mark Reader

Designed specifically for industrial direct part mark (DPM) reading applications

- Custom DPM technology combines specialized illumination, optics and decoding software all optimized for DPM applications
- Easy-to-use software set-up tool optimizes the lighting, optics and decoding to ensure top performance in your environment
- Rugged, ergonomic design to withstand the most demanding manufacturing environments
- 6320 provides Bluetooth® wireless connectivity

Document Imaging



4800dr 2D Document Reader

Designed to digitize paper documents for simple and efficient paperless processing, storage, and retrieval

- Imager, stand and document tray work together as an integrated document imaging solution
- Enables imaging documents up to 8.5" x 11.0" (A4) in size and ensures crisp images regardless of document or font color
- Reliable technology with no moving parts and backed by a 3-year comprehensive warranty
- Built-in barcode scanning eliminates the cost of a secondary barcode scanner

Self-Service Kiosk



Image Kiosk™ 8560 / 8570

Enables a range of intuitive self-service functionality including price checking, item information look-up, loyalty program administration, and automated check-in for a variety of applications

- Small footprint, taking up minimal floor space
- Finger-touch navigation
- Fast and intuitive barcode reading of all linear and 2D barcodes
- Integrated magnetic stripe reader (IK8570 only)
- Microsoft® Windows® CE 5.0 operating system



Quick Check® Barcode Verification Solutions

Quick Check 890

An integrated solution for barcode symbol verification, combining an optical input device and the Quick Check® Image Data (QCID) graphical user interface

- Easy setup and operation — compatible with most Windows OSs.
- Hands-free use — increases test repeatability in challenging applications
- Interchangeable optical input devices — choice of mouse wand, pen wand or handheld imager.
- Bluetooth® wireless connectivity
- Rechargeable battery eliminates power cables



Quick Check 800

The QC800 quickly performs pass/fail barcode quality testing with the convenience of simple point-and-shoot scanning

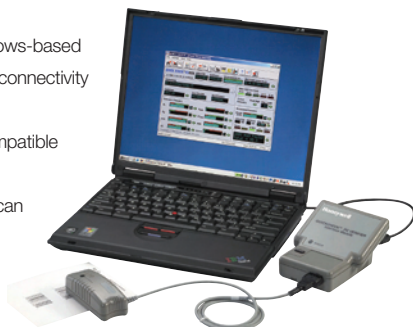
- Test ISO/IEC and traditional quality parameters
- Menu-driven for easy use
- LCD and LEDs display test results instantly
- Command codes for instant programming



Quick Check PC600

Verification system combining Windows-based software, mouse or pen wand, and connectivity to a PC

- Easy setup and operation — compatible with most Windows OSs
- Simple results storage — save scan results as data files and/or ASCII text files



Quick Check On-Line Verifier

Enables "on-the-fly" verification for continual barcode quality monitoring when installed directly to a thermal printer or conveyor system

- Multiple scanning methods — provide reflectance, dimensional and format measurements
- Flexible optical configurations— allows reading & verifying high density or low contrast symbols
- Simple setup — Windows® based software is easy to install and use



Global Services

Repair Services



Service Made Simple

Honeywell's solution for customers who require easy, hassle-free repair service for their hand-held image scanners and Dolphin® Mobile Computers.

Service Made Simple is an affordable solution to help ensure front-line devices are operating at top performance. Features include:

- Full Comprehensive Coverage – devices are covered for normal wear & tear or accidental breakage
- Three-Day Turnaround Promise – products will be serviced in three days and shipped back via overnight delivery
- Value-Add Maintenance – engineering changes, such as firmware upgrades, will be implemented on your devices during the repair process at no extra cost

Professional Services

Our team of Honeywell professionals and business partners can assist you with in-depth solution planning and project execution, ranging from site analyses and consulting to software application development and system installations—all helping ensure that your project goals and long-term needs are met.

Software Services

Our software consultants and business solution partners work as an extension of your development team to understand your specific software application requirements and help you build an application that best suits your business needs.

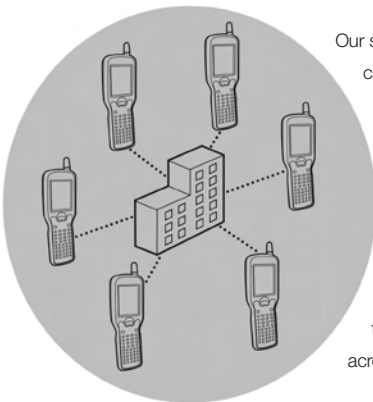
Equipment Configuration and Staging

Device staging and configuration can be an extremely inefficient process to manage internally. We have the ability to save you time and money, improving your overall ROI—by providing devices completely configured for a full “out of the box” solution.

Custom Hardware Configuration

Specifically designed for enterprise-class customers with unique requirements, we offer the option to customize your hardware solutions in a variety of ways to optimize usability in specific applications.

Software



Our suite of select software products extend the capability of your Honeywell solution.

Remote Device Management **SOTI MobiControl**

Advanced remote device management, security and support for Dolphin® Mobile Computers, enabling companies to centrally manage and secure their devices across the enterprise.

Terminal Emulation

PowerNet Twin TE Client

Designed specifically for WLAN devices, this software integrates with our Dolphin® Mobile Computers and Image Kiosk™ to enable customized functionality for wireless data collection including keyboard mapping, automated login capabilities and pass-through printing.

Rapid Application Development Tools

ITScriptNet™ OMNI

A simplified user interface that makes developing solutions on Dolphin® Mobile Computers and Image Kiosks™ both efficient and cost-effective. Developers can harness the data collection and communication technologies in our devices to create a variety of applications for inventory control, asset management, warehousing, and more.

Product Technical Specifications

Dolphin Mobile Computers

	Operating System	Display	Wireless Communications			GPS	Data Capture	Keypad	IP Rating	Drop Specification	Warranty (years)
			WPAN	WLAN	WWAN						
Dolphin 9900	Microsoft® Windows Mobile® 6	3.5" 1/4 VGA color display with industrial-grade touch panel	Bluetooth®	802.11b/g	GSM/e-GPRS	✓	>Linear and 2D Scanning >Image and Signature Capture	43-key alpha-shifted numeric 56-key full alpha/numeric	IP64	5-ft (1.5m) drops to concrete	2
Dolphin 9550 / 9551 / 9501	Microsoft® Windows Mobile® 5.0 or Microsoft® Windows Mobile® 2003	3.5" 1/4 VGA color display with industrial-grade touch panel	Bluetooth®	802.11b			>Linear and 2D Scanning >Image and Signature Capture >Laser Scanning Option	35-key numeric-shifted alpha 43-key alpha-shifted numeric 56-key full alpha/numeric	IP64	5-ft (1.5m) drops to concrete	2
Dolphin 7900	Microsoft® Windows Mobile® 5.0 or Microsoft® Windows Mobile® 2003	3.8" 1/4 VGA color display with industrial-grade touch panel	Bluetooth®	802.11b	GSM/GPRS	✓	>Linear and 2D Scanning >Image and Signature Capture	25-key numeric 36-key alpha	IP64	5-ft (1.5m) drops to concrete	2
Dolphin 7850	Microsoft® Windows Mobile® 5.0	Angled 3.5" 1/4 VGA color display with industrial-grade touch panel	Bluetooth®	802.11b/g	N/A		>Linear and 2D Scanning >Image and Signature Capture >Laser Scanning Option	24-key numeric 38-key alpha	IP64	5-ft (1.5m) drops to concrete	2
Dolphin 7600	Microsoft® Windows CE 5.0 or Microsoft® Windows 6	2.8" 1/4 VGA color display	Bluetooth®	802.11b/g	GSM/e-GPRS		>Linear and 2D Scanning >Image and Signature Capture	29-key numeric-shifted alpha 38-key alpha shifted numeric	IP54	5-ft (1.5m) drops to concrete	1

Self-Service Kiosk

	Operating System	Display	Connectivity	Wireless Communications	Data Capture	Warranty (years)
Image Kiosk 8560/70	Microsoft® Windows CE 5.0	4.45" x 3.3" color display touch screen	Standard: RS-232, RS-485, PC USB, USB Hub Host Optional: Ethernet	802.11b	>Linear and 2D Scanning >Image and Signature Capture >Magnetic Stripe Reader (8570)	1

Handheld Image Scanners

Handheld Image Scanners				Data Capture			
	Depth of Field	Drop Specification	IP Rating	Linear barcodes	2D barcodes	Image Capture	Warranty (years)
(100% UPC)							
3800g	18in (46cm)	50 drops to concrete from 5' (1.5m)	IP41	✓			5
3800gPDF	8in (20.3cm)	50 drops to concrete from 5' (1.5m)	IP41	✓	Swipe PDF Decoding		5
3200	10in (25cm)	25 drops to concrete from 5' (1.5m)	IP40	✓			2
3820	24in (61cm)	50 drops to concrete from 6' (1.8m)	IP41	✓			3
3800i	28in (71cm)	50 drops to concrete from 6.5' (2.0m)	IP54	✓			3
3820i	24in (61cm)	50 drops to concrete from 6.5' (2.0m)	IP54	✓			3
(3 mil)							
3800gHD	2.7in (6.9cm)	50 drops to concrete from 5' (1.5m)	IP41	✓			5
(15mil Data Matrix)							
4600g	7.9in (20.1cm)	50 drops to concrete from 6' (1.8m)	IP41	✓	✓	✓	5
4600r	7.9in (20.1cm)	50 drops to concrete from 6' (1.8m)	IP41	✓	✓	✓	5
4800i	7.9in (20.1cm)	50 drops to concrete from 6.5' (2.0m)	IP54	✓	✓	✓	5
4820	10.1in (25.7cm)	50 drops to concrete from 6' (1.8m)	IP41	✓	✓	✓	3
4820i	10.1in (25.7cm)	50 drops to concrete from 6.5' (2.0m)	IP54	✓	✓	✓	3
(10mil Data Matrix)							
6300dpm/ 6320dpm	2.1in (5.5cm)	50 drops to concrete from 6.5' (2.0m)	IP54	Specialized for Direct Part Mark Reading			1.5

Locations: Honeywell Imaging and Mobility

North America

Worldwide Headquarters

700 Visions Drive, P.O. Box 208
Skaneateles Falls, NY 13153-0208

T: +1 (800) 582-4263
F: +1 (315) 685-0049

napresales@handheld.com
Rochester, NY

T: +1 (800) 782-4263
F: +1 (315) 707-2103

Fort Mill, SC

T: +1 (800) 782-4263
F: +1 (803) 835-8097

Europe, Middle East & Africa

European Headquarters

T: +31 (0) 40 290 1600
F: +31 (0) 40 242 5672

eusales@handheld.com
United Kingdom

T: +44 (0) 1925 240 055
F: +44 (0) 1925 247 148

Germany

T: +49 (0) 231 5322 2850
F: +49 (0) 231 5322 2879

Italy

T: +39 02 7254 6754
F: +39 02 7254 6400

Spain

T: +34 93 228 7868
F: +34 93 228 7899

France

T: +33 1 41 15 82 20
F: +33 1 41 15 52 80

Asia and the Pacific Rim

Hong Kong

T: +852 2511 3050
F: +852 2511 3557

appresales@handheld.com
Shanghai, China

T: +86 21 6361 3818
F: +86 21 6361 3808

Japan

T: +81 3 5770 6312
F: +81 3 5770 6313

Latin America

Naples, Florida

T: +1 (239) 263-7600
F: +1 (239) 263-9689

lapresales@handheld.com
Mexico

T: +52 55 5203 2100
F: +52 55 5531 3672

Rio de Janeiro, Brazil

T: +55 21 3535 9100
F: +55 21 3535 9105

For more information:

www.honeywell.com/aidc

Honeywell Imaging and Mobility

700 Visions Drive, P.O. Box 208
Skaneateles Falls, NY 13153-0208

T: +1 (800) 582-4263

F: +1 (315) 685-0049

www.honeywell.com

L/HNVINB/D (EMEA)

July 2008

© 2008 Honeywell International Inc.

Honeywell